



**Chicago
Pneumatic**



VEHICLE SERVICE TOOLS



www.cp.com

People. Passion. Performance.

INTRODUCING CHICAGO PNEUMATIC

At Chicago Pneumatic, our goal is to deliver best-in-class global service and local support to automotive service professionals through a dedicated product portfolio and a strong network of authorized distributors. We generate added value by delivering the best solution to your needs based on decades of experience.

A COMPLETE AUTOMOTIVE OFFER

Chicago Pneumatic's dedication to the automotive industry spans decades. We understand the specific needs of maintaining and repairing cars and truck fleets. In addition to the right power tools, we also develop and build the compressed air and aftermarket solutions that meet every automotive demand. With Chicago Pneumatic, best operating practices in automotive become your own.

Chicago Pneumatic helps make tough jobs easier:

- Products: reliability, ergonomics, safety, robustness and ease of use
- Service: best-in-class support with fast local service
- Expertise: expert advice based on decades of experience, from factory to field, through certified quality testing and training
- Parts: original spare parts and services
- Availability: fast and easy delivery through a dedicated global production and distribution network

”

It's simple, really. You have work to do, and customers to serve. Chicago Pneumatic is there to help you get the job done, without compromise.

“



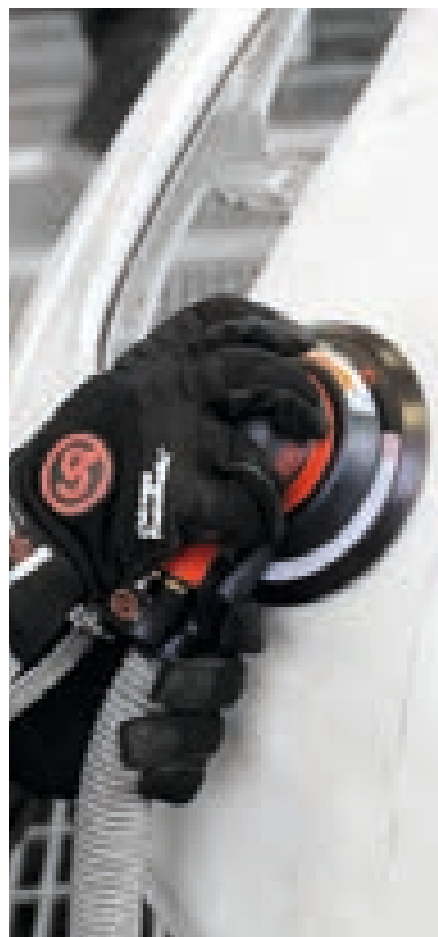
**GENERAL
MECHANICS**



**TIRE
SHOPS**



**BODY
SHOPS**



GLOBAL PRESENCE WITH LOCAL SUPPORT

Since its foundation in the United States in 1901, Chicago Pneumatic has truly gone global. From helping build many of America's landmarks to our current international presence, Chicago Pneumatic has always emphasized local service to build our global reach. Today, you will find us anywhere you operate!



Check out your nearest contact
at **www.cp.com**



www.youtube.com/CPCHANNELS



www.linkedin.com/company/chicago-pneumatic

QR CODES



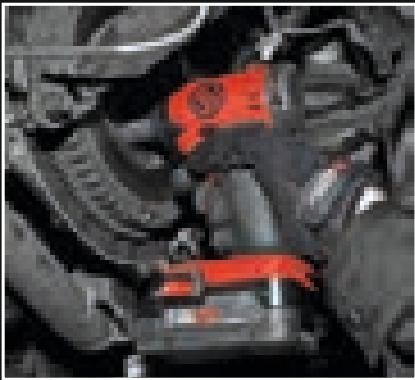
On most pages, QR codes let you extend your reading and get more information about our products in seconds. Flash them with your smartphone and enjoy!



SPARES AND ACCESSORIES

Original CP parts and genuine accessories are available for your Chicago Pneumatic tools. Follow this logo to find the dedicated spare kit and accessories selection listed at the end of each product section.

GENERAL MECHANICS



TIRE SHOPS



BODYSHOPS



CATALOG GUIDE

Applications — Points to the 'Applications' icon in the top left of the product page.

New product focus with QR code — Points to the QR code for the CP7732 product.

CP parts and genuine accessories found on last page of each section — Points to the 'Accessories' section at the bottom of the product page.

Table of characteristics find part number for ordering — Points to the technical specifications table at the bottom of the product page.

Color-coded tabs Quickly find product categories — Points to the vertical tabs on the right side of the catalog page.

Features & benefits Main product features, & how they help the operator — Points to the 'Features & Benefits' section of the product page.

Similar product(s) in the range — Points to the 'Similar products' section at the bottom of the product page.

APPLICATIONS



GENERAL MECHANICS



TIRE SHOPS



BODY SHOPS

This catalog is also available online at www.cp.com/literature

IMPACT & RATCHET WRENCHES

See the unique CP7732 p.10



▶ IMPACT WRENCHES

An impact wrench delivers a series of rotary blows to a fastener, producing torque. Chicago Pneumatic impact wrenches offer optimal power-to-weight ratio, fast rundown and great user comfort.

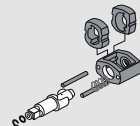
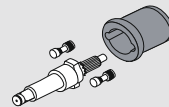
▶ RATCHET WRENCHES

For fastening applications in tight and difficult to access areas, CP offers a wide range of ratchet wrenches with various square drive sizes and up to 90 ft-lbs (122Nm).

SELECT THE CLUTCH TYPE BEST FOR YOUR APPLICATION

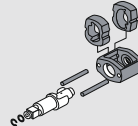
DYNA-PACT:

An extremely smooth clutch for better operator comfort which provides a high power to weight ratio



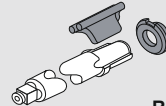
Spring Hammer:

Evolution of the Twin hammer design which incorporates a spring for smoother operation



Twin Hammer:

All around clutch with a high ultimate torque and high power to weight ratio



Rocking dog clutch:

Ideal for very soft joints and provides high speed rundown



S2S Technology is the market's most convenient one handed impact wrench design. The operator can change between forward & reverse with one hand in any position.

There is less stress/fatigue on operator's wrist and arm when changing between forward & reverse.

When using conditioned air at 90 psi, tightening and loosening of a fastener should not exceed 5 seconds. Excessive runtime to reach higher torques will decrease tool life. If the desired operation is not completed within 5 seconds, a higher performance tool is recommended.

CHOOSE THE RETAINER YOU NEED

A wide selection of retainers provides versatility for every type of application. From simple friction ring retention for easy socket change to dual retention and spline configurations for maximum power transfer and safety.



Hole for pin o-ring type retention



Friction Ring for rapid socket change



Dual (Hole + Friction) for versatility



Quick Change for screwdriver bits or torsion bars



Spline for maximum torque transfer and durability

IMPACT WRENCHES

Impact 3/8" & 1/4"



1/4"



CP719 COMPACT & LIGHTWEIGHT

FEATURES

- DYNA-PACT mechanism (Pin clutch) in oil bath
- Fast with 7,000 rpm and high number of blow/min.
- One-handed reverse with integrated power regulator

BENEFITS

- Compact & light weight
- Ideal for general maintenance in confined areas
- Lightweight for operator comfort
- Ideal for small fasteners, such as light assembly and repair work

CP719QC



Same features as CP719
with 1/4" hex chuck



3/8"



CP721 COMFORT & DURABILITY

FEATURES

- Rocking dog clutch in oil bath
- Built-in power regulator
- Ergonomic handle

BENEFITS

- Smooth operation and good durability
- Comfort and compact for easy access
- Great tool on soft joints for general maintenance



3/8"



CP7722 COMPACT FOR EASIER ACCESS

FEATURES

- Butterfly forward/reverse throttle
- Rocking dog clutch for smooth operation and durability
- 4 positive power settings

BENEFITS

- Best price to performance ratio in its class

MODEL	PART NUMBER	OUTPUT DRIVE		FREE SPEED		WORKING TORQUE (FW)		MAX TORQUE (REV)		AVERAGE AIR CONS.		AIR CONS. @ LOAD		OVERALL LENGTH		NET WEIGHT		AIR INLET
		in.	mm	rpm	ft.lb	Nm	ft.lb	Nm	cfm	l/s	cfm	l/s	in.	mm	lb	kg	NPTF	
CP719	T025366	1/4		7,000	5-20	7-27	34	47	2.0	0.9	8	3.8	4.5	114	2.5	1.1	1/4"	
CP719QC	T025367	1/4 Hex.		7,000	5-20	7-27	34	47	2.0	0.9	8	3.8	4.5	114	2.5	1.1	1/4"	
CP721	T021963	3/8		11,000	5-50	7-68	75	102	2.5	1.2	10	4.7	5.75	146	2.6	1.2	1/4"	
CP7722	894 107 7220	3/8		9,500	5-65	7-88	90	122	3.2	1.5	13	6	6.3	160	2.1	1.0	1/4"	

All models: Hose int. 3/8" (10 mm) - @90 PSI (@6.3 Bar)

Listed specifications are for reference only. Please check documents in each tool.

Impact 3/8" & 1/2"



NEW

3/8"



CP724H
COMPACT & DURABLE

FEATURES

- Pin clutch mechanism in oil bath
- One handed push button forward / reverse
- Curved handle with Thermo-Plastic Rubber injected in housing for a durable and comfortable grip.
- Resistant to most workshop chemicals
- 360° swivel air inlet
- Teasing trigger

BENEFITS

- Compact
- Durable
- Easy to handle
- Rugged

CP726H

Same features as CP724H with 1/2" square drive



3/8"



CP7729
SIDE-2-SIDE: UNIQUE REVERSE TECHNOLOGY FOR PERFECT BALANCE & POWER

FEATURES

- Twin hammer clutch
- Composite handle and magnesium clutch housing
- S2S technology and 3 positive power settings

BENEFITS

- The most powerful 3/8" in its class
- Maximize operator comfort with an extremely light and well balanced design
- Most convenient and unique fwd/rev technology in the market



1/2"



CP7739
SIDE-2-SIDE: UNIQUE REVERSE TECHNOLOGY FOR PERFECT BALANCE & POWER

FEATURES

- Twin hammer clutch
- Composite handle and magnesium clutch housing
- S2S technology and 3 positive power settings

BENEFITS

- General Maintenance
- Maximize operator comfort with an extremely light & well balanced tool
- Most convenient and unique fwd/rev technology in the market



MODEL	PART NUMBER	OUTPUT DRIVE		FREE SPEED		WORKING TORQUE (FW)		MAX TORQUE (REV)		AVERAGE AIR CONS.		AIR CONS. @ LOAD		OVERALL LENGTH		NET WEIGHT		AIR INLET
		in.	rpm	ft.lb	Nm	ft.lb	Nm	cfm	l/s	cfm	l/s	in.	mm	lb	kg	NPTF		
CP724H	894 100 7241	3/8	9,600	68-190	92-257	200	271	3.8	1.7	15	7.1	5.7	146	3.1	1.4	1/4"		
CP726H	894 100 7261	1/2	9,600	68-190	92-257	200	271	3.8	1.7	15	7.1	5.7	146	3.1	1.4	1/4"		
CP7729	894 107 7290	3/8	9,400	50-300	68-407	415	563	5.0	2.4	20	9.4	6.4	163	2.8	1.3	1/4"		
CP7739	894 107 7390	1/2	9,900	50-305	68-414	450	610	5.0	2.4	20	9.4	6.4	163	2.8	1.2	1/4"		

All models: Hose int. 3/8" (10 mm) - @90 PSI (@6.3 Bar)

Listed specifications are for reference only. Please check documents in each tool.

IMPACT WRENCHES

Impact 3/8" & 1/2"



CP7732

1/2"



ULTRA COMPACT & POWERFUL

- Best power to weight ratio: 450 ft-lbs / 610 Nm
- Ultra compact
- Easy to use
- Durable

CP7731

Same features as CP7732 with 3/8" square drive



102-310 ft.lb
138-420 Nm



450 ft.lb
610 Nm



9,000

- Steel front cover & aluminum body
- One hand operation forward – reverse by either left or right handed users
- Easily adjustable for either right or left handed operation
- 3 setting positions
- Only 4.4" long
- Jumbo hammer



MODEL	PART NUMBER	OUTPUT DRIVE		FREE SPEED		WORKING TORQUE (FW)		MAX TORQUE (REV)		AVERAGE AIR CONS.		AIR CONS. @ LOAD		OVERALL LENGTH		NET WEIGHT		AIR INLET
		in.	rpm	ft.lb	Nm	ft.lb	Nm	cfm	l/s	cfm	l/s	in.	mm	lb	kg	NPTF		
CP7731	894 107 7310	3/8	6,400	71-242	96-328	306	415	4.5	2.1	18	8.3	4.4	112	2.9	1.3	1/4"		
CP7732	894 107 7320	1/2	9,000	102-310	138-420	450	610	5.0	2.4	19.6	9	4.4	112	2.9	1.3	1/4"		

All models: Hose int. 3/8" (10 mm) - @90 PSI (@6.3 Bar)

Listed specifications are for reference only. Please check documents in each tool.

Impact 1/2"



NEW

1/2"



CP7620 COMPACT & DURABLE

FEATURES

- Pin clutch mechanism in oil bath
- Single handed push button fwd/rev with 2 power settings
- Full power in reverse
- Two stage teasing trigger
- Curved handle
- Aluminum body with composite clutch cover
- Through handle air exhaust and 360° air inlet swivel

BENEFITS

- Compact
- Durable
- Rugged
- Easy to operation
- Operator comfort with smooth clutch mechanism & curved handle
- A powerful yet economical tool ideal for general repair, transmission work, exhaust systems, and body shops

CP7620-2

Same features as CP7620 with 2" (51 mm) extended anvil



CP7620 Kit



NEW

1/2"



CP7736 GREAT PERFORMANCE AND DURABILITY

FEATURES

- 670 ft. lbs. - 900 Nm max in reverse
- Twin hammer mechanism and steel motor
- Well balanced minimizing wrist strain
- Ergonomic handle fits perfectly in the hand
- Suited for all maintenance applications
- Ideal for:
 - Passenger vehicle tire changing
 - Light truck tire changing
 - MRO applications
- 3 power settings in forward and one in reverse

BENEFITS

- Powerful
- Durable
- Comfort and compact
- Versatile
- Easy to use
- Best ratio price performance in its class

CP7736-2

Same features as CP7736 with 2" (51 mm) extended anvil



1/2"



CP749 POWERFUL & ROBUST

FEATURES

- CP's patented SprinHammer oil bath clutch
- One-handed reverse button with 4-power settings
- Perfect for general maintenance

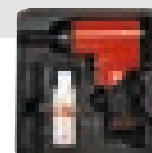
BENEFITS

- Powerful & durable motor delivering high torque
- Withstands rough use with operator comfort
- Ideal for general maintenance & repairs

CP749-2

Same features as CP749 with 2" (51 mm) extended anvil

CP749-2 Kit



MODEL	PART NUMBER	OUTPUT DRIVE		FREE SPEED	WORKING TORQUE (FW)		MAX TORQUE (REV)		AVERAGE AIR CONS.		AIR CONS. @ LOAD		OVERALL LENGTH		NET WEIGHT		AIR INLET
		in.	rpm		ft.lb	Nm	ft.lb	Nm	cfm	l/s	cfm	l/s	in.	mm	lb	kg	NPTF
CP7620	894 107 6200	1/2	10,000	25-310	34-420	425	576	4.2	2	17.7	8.4	7.1	180	5.1	2.3	1/4"	
CP7620-2	894 107 6202	1/2	10,000	25-310	34-420	425	576	4.2	2	17.7	8.4	9.1	230	5.7	2.6	1/4"	
CP749	T024587	1/2	6,400	50-450	68-610	610	827	5.5	2.6	22	10.4	7	178	5.5	2.5	1/4"	
CP749-2	T024673	1/2	6,400	50-450	68-610	625	827	5.5	2.6	22	10.4	9	229	5.7	2.6	1/4"	
CP7736	894 107 7360	1/2	10,020	51-568	69-770	664	900	4.4	2.1	18	8.3	7.6	192	5.7	2.6	1/4"	
CP7736-2	894 107 7362	1/2	10,020	51-568	69-770	664	900	4.4	2.1	18	8.3	9.6	243	6.5	2.9	1/4"	

All models: Hose int. 3/8" (10 mm) - @90 PSI (@6.3 Bar)

Listed specifications are for reference only. Please check documents in each tool.

IMPACT WRENCHES

Impact 1/2"



CP7748

1/2"



DURABLE, POWERFUL & ERGONOMIC

- Most powerful tool in its class: 922 ft.lbs – 1,250 Nm of maximum real torque in reverse
- Lightweight composite housing
- Contoured comfort grip handle with TPR injected handle
- Smooth Forward / Reverse
- Switch on back
- Suited for all maintenance applications: Passenger vehicle and light truck



CP7748-2

Same features as CP7748 with 2" (51 mm) extended anvil



75-580 ft.lb
102-786 Nm



922 ft.lb
1,250 Nm



8,200

- One handed forward/reverse
- Aluminum clutch & back housing
- Friction ring socket retainer
- Full teasing trigger
- Ergonomic curved design and smaller diameter
- Handle for better grip and balance
- Twin hammer clutch mechanism
- 360° swivel air inlet



MODEL	PART NUMBER	OUTPUT DRIVE	FREE SPEED	WORKING TORQUE (FW)		MAX TORQUE (REV)		AVERAGE AIR CONS.		AIR CONS. @ LOAD		OVERALL LENGTH		NET WEIGHT		AIR INLET
		in.	rpm	ft.lb	Nm	ft.lb	Nm	cfm	l/s	cfm	l/s	in.	mm	lb	kg	NPTF
CP7748	894 107 7480	1/2	8,200	75-580	102-786	922	1,250	6.2	3	25	12	7.8	200	4.6	2.0	1/4"
CP7748-2	894 107 7482	1/2	8,200	75-580	102-786	922	1,250	6.2	3	25	12	9.8	250	5.1	2.4	1/4"

All models: Hose int. 3/8" (10 mm) - @90 PSI (@6.3 Bar)

Listed specifications are for reference only. Please check documents in each tool.

Impact 1/2"



NEW

1/2" 



CP7748TL

TORQUE LIMITED IN FORWARD AND EXTREME TORQUE IN REVERSE

FEATURES

- 2 power positions: Forward - torque limited, Reverse - full power
- 66-70 ft. lbs. - 90-96 Nm in torque limited position in forward
- Aluminum clutch & rear housings
- Universal & durable twin hammer mechanism
- Full teasing trigger
- 360° swivel air inlet

BENEFITS

- Quickly and easily snug bolts without over tightening and damaging studs
- One Hand Operation: 2 power setting positions
- Low sound level
- Suited for all light vehicle tire changing applications



NEW

1/2" 



CP7748TL-2

TORQUE LIMITED IN FORWARD AND EXTREME TORQUE IN REVERSE

FEATURES

- 2" extended anvil
- 2 power positions: Forward - torque limited, Reverse - full power
- 66-70 ft. lbs. - 90-96 Nm in torque limited position in forward
- Aluminum clutch & rear housings
- Universal & durable twin hammer mechanism
- Full teasing trigger
- 360° swivel air inlet

BENEFITS

- Quickly and easily snug bolts without over tightening and damaging studs
- One Hand Operation: 2 power setting positions
- Low sound level
- Suited for all light vehicle tire changing applications

The CP7748TL series is intended to be used as a "snugging" tool prior to final tightening with a calibrated torque wrench to reach the car manufacturer's specified torque rating for wheel assembly.



MODEL	PART NUMBER	OUTPUT DRIVE		FREE SPEED		WORKING TORQUE (FW)		MAX TORQUE (REV)		AVERAGE AIR CONS.		AIR CONS. @ LOAD		OVERALL LENGTH		NET WEIGHT		AIR INLET
		in.	rpm	ft.lb	Nm	ft.lb	Nm	cfm	l/s	cfm	l/s	in.	mm	lb	kg	NPTF		
CP7748TL	894 107 7484	1/2	8,200	66-70	90-96	922	1,250	5.5	2.5	22	10	7.8	200	4.8	2.2	1/4"		
CP7748TL-2	894 107 7485	1/2	8,200	66-70	90-96	922	1,250	5.5	2.5	22	10	9.8	250	5.3	2.4	1/4"		

All models: Hose int. 3/8" (10 mm) - @90 PSI (@6.3 Bar)

Listed specifications are for reference only. Please check documents in each tool.

IMPACT WRENCHES

Impact 1/2"



CP7749

1/2"



POWERFUL & LIGHTWEIGHT

- Maximize operator comfort with an extremely well balanced tool
- Most convenient and unique reverse technology in the market



CP7749-2

Same features as CP7749 with 2" (51 mm) extended anvil



100-522 ft.lb
135-704 Nm



955 ft.lb
1,300 Nm



9,000

- Twin hammer clutch
- Composite handle and magnesium clutch housing
- S2S technology and 3 positive power settings
- Full power in reverse up to 955 ft.lbs (1,300 Nm)
- Lightweight and low noise level tool



MODEL	PART NUMBER	OUTPUT DRIVE	FREE SPEED	WORKING TORQUE (FW)		MAX TORQUE (REV)		AVERAGE AIR CONS.		AIR CONS. @ LOAD		OVERALL LENGTH		NET WEIGHT		AIR INLET
		in.	rpm	ft.lb	Nm	ft.lb	Nm	cfm	l/s	cfm	l/s	in.	mm	lb	kg	NPTF
CP7749	894 107 7491	1/2	7,000	100-522	135-704	955	1,300	6.2	3	25	12	6.7	171	4.0	1.8	1/4"
CP7749-2	894 107 7493	1/2	7,000	100-522	135-704	955	1,300	6.2	3	25	12	8.7	221	4.6	2.0	1/4"

All models: Hose int. 3/8" (10 mm) - @90 PSI (@6.3 Bar)

Listed specifications are for reference only. Please check documents in each tool.

Impact 3/4"



3/4"



CP7630 POWERFUL AND VERSATILE

FEATURES

- Well balanced minimizing wrist strain
- Handle fits perfectly in the hand
- Suited for all maintenance applications
 - Vans & Heavy vehicle mechanical repair
 - MRO applications

BENEFITS

- Powerful
- Comfort & compact
- Versatile
- Best ratio price performance in its class



3/4"



CP7763 COMPACT & POWERFUL

FEATURES

- 3/4" impact wrench with Ring retainer
- Twin hammer clutch
- High power: 1,200 ft.lbs (1,630 Nm)
- Combined power regulator with forward/reverse

BENEFITS

- Ideal for general maintenance
- Powerful motor and durable clutch
- Operator comfort



3/4"



CP7769 POWERFUL, LIGHTWEIGHT & COMPACT

FEATURES

- 3/4" composite impact wrench with dual retainer (hole + ring)
- 1,440 ft.lbs (1,950Nm) of maximum torque in reverse
- Insulating and lightweight composite handle
- S2S easy one handed forward reverse
- Full teasing trigger

BENEFITS

- Powerful impact for general maintenance
- Maximize operator comfort: lightweight and balanced design
- Energy savings: low air consumption



CP7630-6

Same features as CP7630 with 6" (152 mm) extended anvil



CP7763-6

Same features as CP7763 with 6" (152 mm) extended anvil



CP7769-6

Same features as CP7769 with 6" (152 mm) extended anvil



MODEL	PART NUMBER	OUTPUT DRIVE		FREE SPEED		WORKING TORQUE (FW)		MAX TORQUE (REV)		AVERAGE AIR CONS.		AIR CONS. @ LOAD		OVERALL LENGTH		NET WEIGHT		AIR INLET
		in.	rpm	ft.lb	Nm	ft.lb	Nm	cfm	l/s	cfm	l/s	in.	mm	lb	kg	NPTF		
CP7630	894 107 6300	3/4	6,900	130-809	177-1,097	1,100	1,500	5.1	2.4	21	9.7	9.45	240	10.7	4.8	3/8"		
CP7630-6	894 107 6306	3/4	7,000	130-809	177-1,097	1,100	1,500	5.1	2.4	21	9.7	15.35	390	10.9	5.0	3/8"		
CP7763	894 107 7630	3/4	6,300	100-950	136-1,288	1,200	1,630	7.5	3.5	30	14.2	8.8	229	11.6	5.3	3/8"		
CP7763-6	894 107 7636	3/4	6,300	100-950	136-1,288	1,200	1,630	7.5	3.5	30	14.2	15	381	13.9	6.3	3/8"		
CP7769	894 107 7690	3/4	7,000	300-1,080	407-1,464	1,440	1,950	7.8	3.7	31	14.7	8.4	214	7.4	3.4	3/8"		
CP7769-6	894 107 7696	3/4	7,000	300-1,080	407-1,464	1,440	1,950	7.8	3.7	31	14.7	14.4	365	8.8	4.0	3/8"		

All models: Hose int. 3/8" (10 mm) - @90 PSI (@6.3 Bar)

Listed specifications are for reference only. Please check documents in each tool.

IMPACT WRENCHES

Impact 1"



1"



CP7773 COMPACT & POWERFUL

FEATURES

- Twin hammer clutch
- High power: 1200 ft.lbs (1627 Nm)
- Compact size and only 12,1 lbs (5.25 kg)
- Combined power regulator with forward/reverse

BENEFITS

- Ideal for general maintenance applications
- Powerful motor and durable clutch
- Operator comfort due to reduced noise level



1"



CP7779 POWERFUL, LIGHTWEIGHT & COMPACT

FEATURES

- 1" composite impact wrench with dual retainer (hole + ring)
- 1,440 ft.lbs (1,950Nm) of maximum torque in reverse
- Insulating and lightweight composite handle
- S2S easy forward reverse
- Full teasing developed trigger

BENEFITS

- Powerful impact for general maintenance
- Maximize operator comfort: lightweight and balanced design
- Energy savings: low air consumption



1"



CP893 DURABILITY & PERFORMANCE

FEATURES

- DYNA-PACT clutch mechanism in oil bath
- High performance motor
- One-handed push button forward/reverse with 4 positive power settings
- Full power in reverse
- Adjustable side handle

BENEFITS

- Maximize power output
- Operator comfort and durability
- Ideal tool for maintenance and heavy vehicle general repair



CP7779

MODEL	PART NUMBER	OUTPUT DRIVE	FREE SPEED	WORKING TORQUE (FW)		MAX TORQUE (REV)		AVERAGE AIR CONS.		AIR CONS. @ LOAD		OVERALL LENGTH		NET WEIGHT		AIR INLET
		in.	rpm	ft.lb	Nm	ft.lb	Nm	cfm	l/s	cfm	l/s	in.	mm	lb	kg	NPTF
CP7773	894 107 7730	1	6,300	100-950	136-1,288	1,200	1,630	7.5	3.5	30	14.2	9.2	234	12.1	5.5	3/8"
CP7779	894 107 7790	1	7,000	300-1,080	407-1,464	1,440	1,950	7.8	3.7	31	14.7	8.7	221	7.7	3.5	3/8"
CP893	T024272	1	4,400	200-710	271-963	1,400	1,898	10.3	4.8	41	19.3	11.5	292	23.0	10.4	1/2"

All models: Hose int. 1/2" (13 mm) - @90 PSI (@6.3 Bar)

Listed specifications are for reference only. Please check documents in each tool.

Impact 1"



1" 



CP894

SMOOTH OPERATION & ROBUST

FEATURES

- 1" pistol impact wrench with Dual retainer
- DYNA-PACT (Pin clutch) mechanism in oil bath
- One-handed reverse button with 3 settings of power

BENEFITS

- Ideal tool for general maintenance operations
- Clutch delivers smooth operation and great durability
- Side handle provides additional comfort



1" 



CP7776

HIGH TORQUE & COMFORT

FEATURES

- Pin-less closed reinforced rocking dog clutch mechanism
- TPR handle & side handle
- Regulator integrated in forward/reverse knob with 3 positions power setting in both directions
- Rubber bumper to protect both application and tool
- Dual socket retention, hole and friction ring
- Angled down exhaust blows air away from work place

BENEFITS

- High Torque & Powerful
- Durable
- Comfort & Great Handling
- Useful



1" 



CP7640-6

EFFICIENT

FEATURES

- Rocking dog clutch
- Teasing throttle
- Inside trigger
- 6" extended anvil

BENEFITS

- Durable and Comfortable

CP7776-6

Same features as CP7776 with 6" (152mm) extended anvil



CP7776

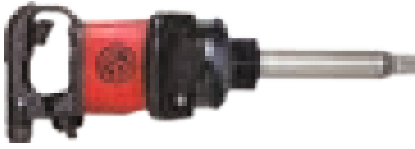
MODEL	PART NUMBER	OUTPUT DRIVE	FREE SPEED	WORKING TORQUE (FW)		MAX TORQUE (REV)		AVERAGE AIR CONS.		AIR CONS. @ LOAD		OVERALL LENGTH		NET WEIGHT		AIR INLET
		in.	rpm	ft.lb	Nm	ft.lb	Nm	cfm	l/s	cfm	l/s	in.	mm	lb	kg	NPTF
CP894	T024743	1	4,100	100-1,200	136-1,627	1,700	2,305	11.3	5.3	45	21.2	11.75	298	25.0	11.3	1/2"
CP7776	894 107 7760	1	5,000	704-1,528	955-2,073	1,770	2,400	8.2	3.9	33	15.6	11.4	289	24.7	11.2	1/2"
CP7776-6	894 107 7766	1	5,000	704-1,528	955-2,073	1,770	2,400	8.2	3.9	33	15.6	17.6	447	27.8	12.6	1/2"
CP7640-6	894 100 7976	1	4,000	150-900	200-1,225	1,400	1,898	10.0	4.7	40	18.9	22.25	565	29.8	13.5	1/2"

All models: Hose int. 1/2" (13 mm) - @90 PSI (@6.3 Bar)

Listed specifications are for reference only. Please check documents in each tool.

IMPACT WRENCHES

Impact 1" & #5



1"



CP7782-6

HIGH TORQUE & COMFORT

FEATURES

- Pinless closed reinforced rocking dog impact mechanism
- Dual socket retention, hole and friction ring
- Ergonomic side handle
- Full teasing trigger
- Regulator with integrated forward/reverse with 3-position power settings in both directions

BENEFITS

- Highly efficient, yet economical, motor with durable reinforced clutch mechanism
- Durable impact wrench with great power for the toughest jobs on heavy vehicles

CP7782

Same features as CP7782-6 with 1" short anvil



CP7782-SP6

Same features as CP7782-6 with #5 spline



1"



CP7780-6

LIGHTWEIGHT & POWERFUL

FEATURES

- Lightweight: Only 17 lbs. (7.7 kg) to help reduce operator fatigue
- Integrated protective cover on the clutch housing
- Twin hammer mechanism in oil bath
- Dedicated lever for forward & reverse
- Ergonomic side handle with soft touch grip
- Four position power setting for both fwd and rev on both sides of the tool
- Dual socket retention, hole and friction ring

BENEFITS

- Lightweight maximizes operator comfort
- Ergonomic and intuitive handling
- High Power to Weight ratio for General Maintenance applications

CP7780

Same features as CP7780-6 with 1" short anvil



1"



CP5000

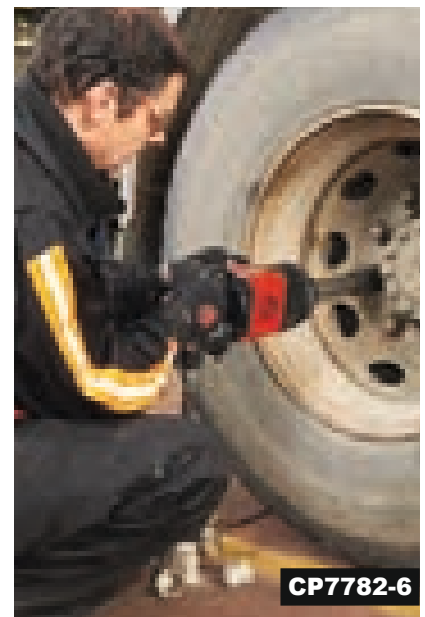
MOST POWERFUL

FEATURES

- Rocking dog clutch
- Four position power setting throttle for ease of use
- Convenient reverse valve
- 7" extended anvil

BENEFITS

- Unmatched durability with reliable mechanism & durable housing
- Excellent for off-road equipment



CP7782-6

MODEL	PART NUMBER	OUTPUT DRIVE	FREE SPEED	WORKING TORQUE (FW)		MAX TORQUE (REV)		AVERAGE AIR CONS.		AIR CONS. @ LOAD		OVERALL LENGTH		NET WEIGHT		AIR INLET
		in.	rpm	ft.lb	Nm	ft.lb	Nm	cfm	l/s	cfm	l/s	in.	mm	lb	kg	NPTF
CP7782-6	894 107 7826	1	5,200	370-1,475	500-2,000	1,920	2,600	10.0	4.8	40.7	19.2	20.4	520	25.6	11.6	1/2"
CP7782	894 107 7820	1	5,200	370-1,475	500-2,000	1,920	2,600	10.0	4.8	40.7	19.2	14.7	370	22.2	10.1	1/2"
CP7782-SP6	894 107 7821	#5	5,200	370-1,475	500-2,000	1,920	2,600	10.0	4.8	40.7	19.2	20.4	520	25.6	11.6	1/2"
CP7780-6	894 107 7806	1	5,000	260-1,220	350-1,650	1,550	2,100	12.0	5.6	49.8	23.4	19.3	490	17.0	7.7	1/2"
CP7780	894 107 7800	1	5,000	260-1,220	350-1,650	1,550	2,100	12.0	5.6	49.8	23.4	13.2	335	15.0	6.8	1/2"
CP5000	T024585	1	3,700	185-2,065	240-2,800	2,500	3,390	11.9	5.6	52	25	22.5	572	35.7	16.2	1/2"

All models: Hose int. 1/2" (13 mm) - @90 PSI (@6.3 Bar)

Listed specifications are for reference only. Please check documents in each tool.

Spares & Accessories



TUNE-UP KITS & REPAIR KITS

MODEL	TUNE-UP KIT	REPAIR KIT
CP7630	894 017 1521	
CP7630-6	894 017 1521	
CP894	CA149855	
CP893	CA146649	CA149160
CP7780	894 016 9518	
CP7780-6	894 016 9518	
CP7779	894 016 9895	
CP7782	894 016 9847	
CP7748TL	894 016 9810	
CP7748TL-2	894 016 9810	
CP7782-SP6	894 016 9847	
CP7774/7774-6	894 016 2697	
CP7773	894 016 2926	894 016 2929
CP7620	894 017 2501	
CP7620-2	894 017 2501	
CP7763	894 016 2925	894 016 2927
CP7763-6	894 016 2925	894 016 2928
CP7749/7749-2	894 016 7481	894 016 7482
CP7748/7748-2	894 016 9847	
CP7739	894 016 8743	
CP7733	894 015 8860	894 015 8861
CP7733-2	894 015 8860	894 015 8862
CP7731/CP7732	894 017 1649	
CP7729	894 016 8742	
CP7722	894 016 4482	
CP749	894 015 8635	894 014 8637
CP749-2	894 015 8635	
CP726H	CA155309	CA155311
CP724H	CA155218	CA155310
CP721	CA118880	
CP719/719QC	CA157285	CA157286
CP5000	CA148687	
CP7776	894 017 2027	
CP7640-6	894 016 8279	

PROTECTIVE COVERS

TOOL	PART NUMBER
PVC tool cover	
CP724, CP726	CA146522
CP749	CA155537
CP7731, CP7732	894 017 2290
CP7736	894 017 1700
CP7763	894 016 7498
CP7749	894 016 7487
CP7769, CP7779	894 016 9917
CP7748	894 017 2117
Protective boot	
CP7729, CP7739	894 016 8830



GLOVES

DESCRIPTION	PART NUMBER
Impact Gloves: Medium	894 017 1574
Impact Gloves: Large	894 015 8618
Impact Gloves: X Large	894 015 8619
Impact Gloves: XX Large	894 017 1573



IMPACT KITS



CP7620 Kit SAE & Metric

Part No. 894 117 6200 / 894 127 6200

Kits include:

- (1) 1/2" Impact wrench CP7620
- (1) Bottle of air tool oil
- (5) SAE Sockets - 1/2", 5/8", 3/4", 7/8" & 15/16" AF or
- (5) Metric Sockets - 14, 16, 17, 19, 22 mm



CP749 Kit Metric

Part No. T025194

Kit includes:

- (1) 1/2" Impact wrench CP749
- (5) Metric Sockets - 14, 16, 17, 19 & 22 mm AF
- (1) Bottle of air tool oil



CP749 Kit SAE

Part No. T025193

Kit includes:

- (1) 1/2" Impact wrench CP749
- (5) SAE Sockets - 1/2", 5/8", 3/4", 7/8" & 15/16" AF
- (1) Bottle of air tool oil

CP749-2 Kit

Part No. T025195

Kit includes:

- (1) 1/2" Impact wrench CP749-2
- (2) SAE Flip Sockets - 3/4", 13/16" & 19 mm, 21 mm
- (1) Bottle of air tool oil

MUFFLERS

TOOL	PART NUMBER
CP7749	894 016 8294



EXHAUST HOSE

TOOL	PART NUMBER
CP7748	894 017 0033



MAGNETIC TOOL HOLDER

TOOL	PART NUMBER
CP9841	894 016 6664

Ideal for 1/2" impacts or smaller



RATCHET WRENCHES

Ratchet 3/8" & 1/4"



1/4"



CP9426

HIGH POWER & COMPACT

FEATURES

- High power: 27 ft.lbs (35 Nm)
- One of the smallest ratchets only 5.1" (130mm) long
- Rubber grip

BENEFITS

- Most powerful in its class
- Operator comfort
- Compact and lightweight

CP9427

Same features as CP9426 with 3/8" square drive



1/4"



CP824

LIGHTWEIGHT & HANDY

FEATURES

- Easy speed control
- Extended length

BENEFITS

- Compact and lightweight
- Designed for greater reach in confined areas
- Excellent for under-dashboard work, small engine repair and small fasteners

CP824T

Same features as CP824 with 3/8" square drive



1/4"



CP825

SMALL & DURABLE

FEATURES

- Progressive teasing throttle
- Small ratchet, only 6.5" (165 mm) long
- Convenient forward and reverse button

BENEFITS

- Ideal for tight access applications
- Compact and lightweight

CP825T

Same features as CP825 with 3/8" square drive

MODEL	PART NUMBER	OUTPUT DRIVE	FREE SPEED	TORQUE RANGE				AVERAGE AIR CONS.		AIR CONS. @ LOAD		OVERALL LENGTH		NET WEIGHT		AIR INLET
				MIN.	MAX.	cfm	l/s	cfm	l/s	in.	mm	lb	kg			
		in.	rpm	ft.lb	Nm	ft.lb	Nm									NPTF
CP9426	615 191 9426	1/4	270	5	7	27	35	3.0	1.4	12	5.6	5.1	128	1.1	0.5	1/4"
CP9427	615 191 9427	3/8	270	5	7	27	35	3.0	1.4	12	5.6	5.1	128	1.1	0.5	1/4"
CP824	T025390	1/4	220	4	5	12.5	17	3.8	1.8	15	7	7.8	197	1.13	0.5	1/4"
CP824T	T025391	3/8	220	4	5	12.5	17	3.8	1.8	15	7	7.8	197	1.13	0.5	1/4"
CP825	T023145	1/4	200	5	7	15	21	2.8	1.3	11	5.1	6.5	165	1.9	0.9	1/4"
CP825T	T023190	3/8	200	5	7	15	21	2.8	1.3	11	5.1	6.5	165	1.9	0.9	1/4"

All models: Hose int. 3/8" (10 mm) - @90 PSI (@6.3 Bar)

Listed specifications are for reference only. Please check documents in each tool.

Ratchet 1/4", 3/8" & 1/2"



1/4" 



CP826

DURABILITY & COMFORT

FEATURES

- Faster rundown with 250 rpm
- Exceptional durability with advanced head design that virtually eliminates slippage

BENEFITS

- Compact tool and polyurethane grip for comfort and control
- Excellent for under-dash-board work, small engine repair and small fasteners

CP826T

Same feature as CP826 with 3/8" square drive



3/8" 



CP7830Q

POWERFUL, DURABLE STURDY ALUMINUM ALLOY HEAD

FEATURES

- Adjustable side exhaust, low noise
- Progressive teasing throttle
- Highest torque on the market: 90 ft.lbs (122 Nm)
- Convenient grease fitting on the reverse button
- Features CP's patented TriSpring anti-slip head design with protective head cover

BENEFITS

- Advanced head design is powerful, light weight and well balanced
- Ratchets for general maintenance
- Durability and comfort

CP7830HQ

Same features as CP7830Q with 1/2" square drive

CP7830HQ Kit



3/8" 



CP886

HIGH TORQUE & COMPACT

FEATURES

- Compact head design
- Hardened gears

BENEFITS

- Good durability over other economically priced ratchets
- Easy grip reverse for simple directional changes

CP886H

Same features as CP886 with 1/2" square drive

MODEL	PART NUMBER	OUTPUT DRIVE	FREE SPEED	TORQUE RANGE				AVERAGE AIR CONS.		AIR CONS. @ LOAD		OVERALL LENGTH		NET WEIGHT		AIR INLET
				MIN.		MAX.		cfm	l/s	cfm	l/s	in.	mm	lb	kg	
				ft.lb	Nm	ft.lb	Nm									
CP826	T025074	1/4	250	5	7	15	21	3.5	1.6	14	6.6	8.0	203	1.13	0.5	1/4"
CP826T	T025075	3/8	250	5	7	15	21	3.5	1.6	14	6.6	8.0	203	1.13	0.5	1/4"
CP7830Q	894 107 8306	3/8	190	10	13	90	122	5.0	2.3	21	8.7	12.0	305	2.7	1.2	1/4"
CP7830HQ	894 107 8308	1/2	190	10	13	90	122	5.0	2.3	21	8.7	12.0	305	2.7	1.2	1/4"
CP886	T024240	3/8	160	10	13	50	68	4.3	2.0	17	8	10.3	260	2.63	1.2	1/4"
CP886H	T024391	1/2	160	10	13	50	68	4.3	2.0	17	8	10.3	260	2.63	1.2	1/4"

All models: Hose int. 3/8" (10 mm) - @90 PSI (@6.3 Bar)

Listed specifications are for reference only. Please check documents in each tool.

RATCHET WRENCHES

Spares & Accessories



TUNE-UP KITS & REPLACEMENT HEAD

MODEL	TUNE-UP KIT	REPLA. HEAD
CP824	CA157871	CA157872
CP824T	CA157871	CA157873
CP825	CA155091	CA155090
CP825T	CA155091	CA155093
CP826	CA155033	CA155034
CP826T	CA156033	CA155035
CP9426	205 052 7033	205 052 7043
CP9427	205 052 7033	205 052 7053
CP886	CA146437	CA146436
CP886H	CA146437	CA147668
CP7830Q	894 015 8552	894 015 8613
CP7830HQ	894 015 8552	894 015 8614

RATCHET KIT



CP7830HQ Kit Metric

Part No. 894 377 8308

Kit includes:

- (1) 1/2" Air ratchet **CP7830HQ**
- (5) Sockets - 10, 13, 14, 16 & 17 mm

RATCHET PROTECTOR COVERS



TOOL	PART NUMBER
PVC tool cover	
CP824	CA157928
CP826 (T)	CA154993
CP825 (T)	CP140128
CP886 (H)	CA133961
CP7830Q (HQ)	CA147993

Impact Sockets



SET - 1/4" SQUARE DRIVE IMPACT SOCKETS

MODEL	PART NUMBER	TYPE	NO. OF PIECES	DIMENSIONS
METRIC (mm)				
SS2114	894 016 4436	STANDARD	14	4, 4.5, 5, 5.5, 6, 7, 8, 9, 10, 11, 12, 13, 14 & 15 mm
SS2114D	894 016 4437	DEEP	14	4, 4.5, 5, 5.5, 6, 7, 8, 9, 10, 11, 12, 13, 14 & 15 mm
SS2112G	894 016 4439	MAGNETIC	12	5, 5.5, 6, 7, 8, 9, 10, 11, 12, 13, 14 & 15 mm
SS2112DG	894 016 4440	DEEP MAGNETIC	12	5, 5.5, 6, 7, 8, 9, 10, 11, 12, 13, 14 & 15 mm
SAE (in)				
SS2010	894 016 4441	STANDARD	10	3/16", 7/32", 1/4", 9/32", 5/16", 11/32", 3/8", 7/16", 1/2" & 9/16"
SS2010E	894 016 4442	DEEP	10	3/16", 7/32", 1/4", 9/32", 5/16", 11/32", 3/8", 7/16", 1/2" & 9/16"
SS206U	894 016 4443	UNIVERSAL	6	1/4", 5/16", 3/8", 7/16", 1/2" & 9/16"
SS209G	894 016 4444	MAGNETIC	9	3/16", 7/32", 1/4", 9/32", 5/16", 11/32", 3/8", 7/16" & 1/2"
SS209DG	894 016 4445	DEEP MAGNETIC	9	3/16", 7/32", 1/4", 9/32", 5/16", 11/32", 3/8", 7/16" & 1/2"



SET - 3/8" SQUARE DRIVE IMPACT SOCKETS

MODEL	PART NUMBER	TYPE	NO. OF PIECES	DIMENSIONS
METRIC (mm)				
SS3113	894 016 4446	STANDARD	13	7, 8, 9, 10, 11, 12, 13, 14, 15, 16, 17, 18 & 19 mm
SS3113D	894 016 4447	DEEP	13	7, 8, 9, 10, 11, 12, 13, 14, 15, 16, 17, 18 & 19 mm
SS3110U	894 016 4448	UNIVERSAL	10	10, 11, 12, 13, 14, 15, 16, 17, 18 & 19 mm
SS3110DU	894 016 4449	DEEP UNIVERSAL	10	10, 11, 12, 13, 14, 15, 16, 17, 18 & 19mm
SS3113G	894 016 4450	MAGNETIC	13	7, 8, 9, 10, 11, 12, 13, 14, 15, 16, 17, 18 & 19 mm
SS3113DG	894 016 4451	DEEP MAGNETIC	13	7, 8, 9, 10, 11, 12, 13, 14, 15, 16, 17, 18 & 19 mm
SAE (in)				
SS3012	894 016 4452	STANDARD	12	5/16", 3/8", 7/16", 1/2", 9/16", 5/8", 11/16", 3/4", 13/16", 7/8", 15/16" & 1"
SS3012D	894 016 4453	DEEP	12	5/16", 3/8", 7/16", 1/2", 9/16", 5/8", 11/16", 3/4", 13/16", 7/8", 15/16" & 1"
SS3012U	894 016 4454	UNIVERSAL	12	5/16", 3/8", 7/16", 1/2", 9/16", 5/8", 11/16", 3/4", 13/16", 7/8", 15/16" & 1"
SS3012DU	894 016 4455	DEEP UNIVERSAL	12	5/16", 3/8", 7/16", 1/2", 9/16", 5/8", 11/16", 3/4", 13/16", 7/8", 15/16" & 1"
SS309G	894 016 4456	MAGNETIC	9	1/4", 5/16", 3/8", 7/16", 1/2", 9/16", 5/8", 11/16" & 3/4"
SS309DG	894 016 4457	DEEP MAGNETIC	9	1/4", 5/16", 3/8", 7/16", 1/2", 9/16", 5/8", 11/16" & 3/4"



SET - 1/2" SQUARE DRIVE IMPACT SOCKETS

MODEL	PART NUMBER	TYPE	NO. OF PIECES	DIMENSIONS
METRIC (mm)				
SS4114	894 016 4458	STANDARD	14	10, 11, 12, 13, 14, 15, 16, 17, 18, 19, 21, 22, 26 & 27 mm
SS4114D	894 016 4459	DEEP	14	10, 11, 12, 13, 14, 15, 16, 17, 18, 19, 21, 22, 26 & 27 mm
SS4113U	894 016 4460	UNIVERSAL	13	12, 13, 14, 15, 16, 17, 18, 19, 20, 21, 22, 23 & 24 mm
SS4113DU	894 016 4461	DEEP UNIVERSAL	13	12, 13, 14, 15, 16, 17, 18, 19, 20, 21, 22, 23 & 24 mm
SS4112G	894 016 4462	MAGNETIC	12	10, 11, 12, 13, 14, 15, 16, 17, 18, 19, 20 & 21 mm
SS4112DG	894 016 4463	DEEP MAGNETIC	12	10, 11, 12, 13, 14, 15, 16, 17, 18, 19, 20 & 21 mm
SS413DTW	894 016 6760	THIN WALL	3	17, 19 & 21 mm
SS413WP	894 016 4464	THIN WALL WHEEL PROT.	3	17, 19 & 21 mm
SS414WP	894 016 8375	THIN WALL WHEEL PROT.	4	17, 19, 21 & 22 mm
SS435B	894 016 8376	TORQUE LTD EXT BAR	5	100, 110, 120, 135 & 150 Nm
SAE (in)				
SS4013	894 016 4465	STANDARD	13	7/16", 1/2", 9/16, 5/8", 11/16", 3/4", 13/16", 7/8", 15/16", 1", 1-1/16", 1-1/8" & 1-1/4"
SS4013D	894 016 4466	DEEP	13	7/16", 1/2", 9/16, 5/8", 11/16", 3/4", 13/16", 7/8", 15/16", 1", 1-1/16", 1-1/8" & 1-1/4"
SS4014U	894 016 4467	UNIVERSAL	14	7/16", 1/2", 9/16, 5/8", 11/16", 3/4", 13/16", 7/8", 15/16", 1", 1-1/16", 1-1/8", 1-3/16" & 1-1/4"
SS4014DU	894 016 4468	DEEP UNIVERSAL	14	7/16", 1/2", 9/16, 5/8", 11/16", 3/4", 13/16", 7/8", 15/16", 1", 1-1/16", 1-1/8", 1-3/16" & 1-1/4"
SS4011G	894 016 4469	MAGNETIC	11	3/8", 7/16", 1/2", 9/16, 5/8", 11/16", 3/4", 13/16", 7/8", 15/16" & 1"
SS4011DG	894 016 4470	DEEP MAGNETIC	11	3/8", 7/16", 1/2", 9/16, 5/8", 11/16", 3/4", 13/16", 7/8", 15/16" & 1"
METRIC (mm) & SAE (in)				
SS4211WP	894 016 4471	THIN WALL WHEEL PROT.	11	3/4", 13/16", 7/8", 15/16", 1", 1-1/16" - 17, 19, 21, 22, 23 mm DP 7/16", 1/2", 9/16", 5/8", 11/16", 3/4", 13/16", 7/8", 15/16", 1", 1-1/16", 1-1/8", 1-1/4" - DP 10, 11, 12, 13, 14, 15, 16, 17, 18, 19, 21, 22, 26, 27 mm, DP 3/4"x13/16, Flip DP 19x21 mm)
SS4229D	894 016 6940	WHEEL SERVICE	29	



IMPACT & RATCHET WRENCHES

Impact Sockets



SET - 1/2" SQUARE DRIVE FLIP SOCKETS

MODEL	PART NUMBER	TYPE	NO. OF PIECES	DIMENSIONS
SS422FTW	894 016 9701	FLIP SOCKET DEEP THIN WALL	2	3/4" x 13/16", 19mm x 21mm
SS422FD	894 016 9702	FLIP SOCKET DEEP	2	3/4" x 13/16", 19mm x 21mm

SET - 3/4" SQUARE DRIVE IMPACT SOCKETS



MODEL	PART NUMBER	TYPE	NO. OF PIECES	DIMENSIONS
METRIC (mm)				
SS618	894 016 4472	STANDARD	8	26, 27, 29, 30, 32, 35, 36 & 38 mm
SS618D	894 016 4473	DEEP	8	26, 27, 29, 30, 32, 35, 36 & 38 mm
SS611DWS	894 016 7072	WHEEL SERVICE	11	Square: 17, 19, 21mm - Deep: 27, 30, 32, 33, 35, 36, 38 & 41 mm
SAE (in)				
SS6008D	894 016 7073	DEEP	8	1", 1-1/16", 1-1/8", 1-1/4", 1-5/16", 1-3/8", 1-7/16" & 1-1/2"
SS6014D	894 016 4475	DEEP	14	3/4", 13/16", 7/8", 15/16", 1", 1-1/16", 1-1/8", 1-3/16", 1-1/4", 1-5/16", 1-3/8", 1-7/16", 1-1/2" & 1-5/8"

SET - 1" SQUARE DRIVE IMPACT SOCKETS



MODEL	PART NUMBER	TYPE	NO. OF PIECES	DIMENSIONS
METRIC (mm)				
SS818	894 016 4476	STANDARD	8	27, 30, 32, 33, 35, 36, 38 & 41 mm
SS814D	894 016 6016	DEEP	4	27, 32, 33 & 36 mm
SS818D	894 016 4477	DEEP	8	27, 30, 32, 33, 35, 36, 38 & 41 mm
SS8107WS	894 016 7877	WHEEL SERVICE	7	5 deep: 27, 33, 35, 36, 41mm / 2 sq: 17, 21 mm
SAE (in)				
SS808	894 016 4478	STANDARD	8	7/8", 15/16", 1", 1-1/16", 1-1/8", 1-3/16", 1-1/4" & 1-1/2"
SS808D	894 016 4479	DEEP	8	7/8", 15/16", 1", 1-1/16", 1-1/8", 1-3/16", 1-1/4" & 1-1/2"
METRIC (mm) & SAE (in)				
SS8208WS	894 016 7876	WHEEL SERVICE	8	3 std (7/8", 1", 33mm); 3 deep (1-1/16", 1-1/8", 1-1/4"); 13/16" sq; 1-1/2" controlled depth
SS8205WS	894 016 6943	WHEEL SERVICE	5	DP 33mm, 1-1/2", TW 1-1/8", 1-1/4", Sq 13/16"
SS8210HDW	894 016 6939	WHEEL SERVICE	10	DP 33 mm, 1", 1-3/16", 1-3/4" TW, DP 1-1/16", 1-1/8", 1-1/4", Ctrl'd DP 1-1/2", Sq 13/16" & 15/16"



For further information about the individual sizes, adapters and extensions see the Impact Sockets catalog available from www.cp.com/literature

BLUETORK NUTRUNNERS



The most reliable and ergonomic solution for Truck and Buses tire changing operations

TOOL SELECTION

- 1 - Reaction bar type
- 2 - Rotating direction
- 3 - Number of torque presets

CP7600C



CP7600xB



CP7600xC



BLUETORK NUTRUNNERS



1 Choose reaction bar type

xB ...with long-reaching reaction blade (included) - for North America -

xC ...extended with spring loaded cup (included)

C ...standard for spring loaded cup or Japanese type cup (not included)

CUPS (TO BE ORDERED WITH THE CP7600C)



Spring loaded cup
894 016 4622

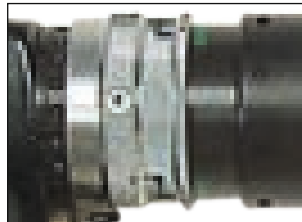


Japanese type cup
894 016 7401

2 Choose rotating direction

- ... Forward only

R... Forward and reverse



3 Choose number of torque presets

- ... 1 torque preset

4P... 4 torque presets



ACCESSORIES



DESCRIPTION	PART NUMBER
Protective cover 1P - Black	894 016 4648
Protective cover 1P - Blue	894 016 4649
Protective cover 4P - Black	894 016 4650
Protective cover 4P - Blue	894 016 4651



DESCRIPTION	PART NUMBER
Impact Gloves: Medium	894 017 1574
Impact Gloves: Large	894 015 8618
Impact Gloves: X Large	894 015 8619
Impact Gloves: XX Large	894 017 1573

DESCRIPTION	PART NUMBER
Suspension yolk Reversible	894 016 6654
Suspension yolk Non reversible	894 016 6659

BlueTork 1"



1" 



CP7600xB

THE MOST ERGONOMIC & EFFICIENT SOLUTION FOR TRUCKS AND BUSES WHEEL MAINTENANCE

FEATURES

- Air Shut-off clutch at preset torque
- Integrated reaction bar standard with blade
- Almost no vibration : <math><2,5 \text{ m/s}^2</math>

BENEFITS

- Ideal for trucks & buses lug nuts
- Accurate torque
- Operator's comfort for more productivity
- Fast rundown



1" 



CP7600C

THE MOST ERGONOMIC & EFFICIENT SOLUTION FOR TRUCKS AND BUSES WHEEL MAINTENANCE

FEATURES

- Air Shut-off clutch at preset torque
- Integrated reaction bar standard with blade
- Low noise level: 79 dB(A)
- Almost no vibration : <math><2,5 \text{ m/s}^2</math>
- Short version with CUPS reaction bar in option

BENEFITS

- Ideal for trucks & buses lug nuts
- Accurate torque
- Operator's comfort for more productivity
- Fast rundown

CUPS (TO BE ORDERED WITH THE CP7600C)



Spring loaded cup
894 016 4622

Japanese type cup
894 016 7401



1" 



CP7600xC

THE MOST ERGONOMIC & EFFICIENT SOLUTION FOR TRUCKS AND BUSES WHEEL MAINTENANCE

FEATURES

- Air Shut-off clutch at preset torque
- Integrated reaction bar standard with blade
- Low noise level: 79 dB(A)
- Almost no vibration : <math><2,5 \text{ m/s}^2</math>
- Extended version with included spring load cup reaction bar

BENEFITS

- Ideal for trucks & buses lug nuts
- Accurate torque
- Operator's comfort for more productivity
- Fast rundown

MODEL	SQUARE DRIVE	SHUT-OFF TORQUE RANGE				FREE SPEED	MAX. AIR CONSUMPTION		AIR INLET
		Min		Max			cfm	l/s	
	in.	ft.lb	Nm	ft.lb	Nm	rpm			NPTF
All CP7600	1	330	450	665	900	100	19	40	3/8"

MODEL	PART NUMBER	REACTION BAR TYPE	REVERSIBILITY	TORQUE PRESETS	OVERALL LENGTH		NET WEIGHT	
					in.	mm	lb	kg
CP7600xB	894 107 6010	xB	-	1	12.9	328	13.2	6
CP7600xB-R	894 107 6011	xB	Reversible	1	13.6	345	14.6	6.6
CP7600xB-R4P	894 107 6015	xB	Reversible	4	15	380	15.2	6.9
CP7600xC-R	894 107 6021	xC	Reversible	1	18.1	460	19.4	8.8
CP7600xC-R4P	894 107 6025	xC	Reversible	4	19.5	495	20.1	9.1
CP7600C-R	894 107 6031	C	Reversible	1	13.6	345	16.3	7.4
CP7600C-R4P	894 107 6035	C	Reversible	4	15	380	17	7.7

BLUETORK NUTRUNNERS

Wheel Torque Solution

OPTIMIZE YOUR PROCESS



STEP 1

Clean bare hub pilots, inspect for wear, and lubricate pads.



STEP 6

Lubricate each nut with one drop of oil between the nut and washer. Rotate the washer to distribute the oil evenly.



STEP 2

Clean the drum and studs. Inspect for fatigue with thread gauge.



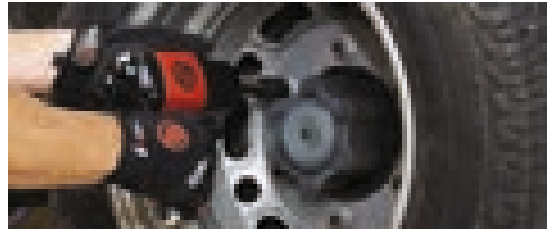
STEP 7

Install the nuts by hand.



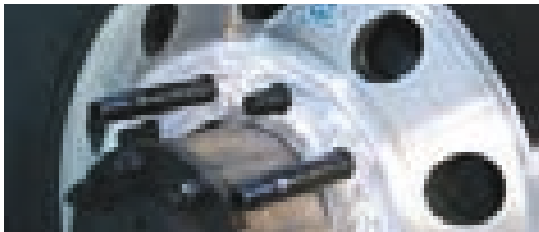
STEP 3

Thoroughly clean both sides of each wheel with the CP7202D sander and an appropriate abrasive. Inspect all surfaces for cracks and unusual wear.



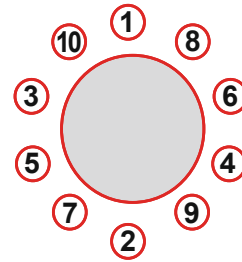
STEP 8

Use a CP7748 impact wrench on the lowest torque setting to quickly snug all the nuts prior to final torquing.



STEP 4

Install both wheels.



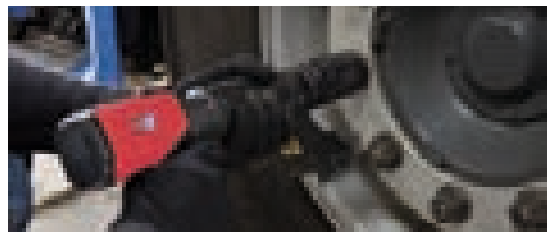
STEP 9

Using the BlueTork, follow the star pattern above to tighten the nuts to the specified torque.



STEP 5

Place two drops of oil near the end of the stud.



STEP 10

To ensure each nut has been torqued, a clockwise check may be performed. The BlueTork is pre-calibrated and is designed for precise torquing.

*Procedure illustrated is for reference only. Actual wheel preparation and assembly is dependant on wheel type and may vary. Please refer to the manufacturer's recommendations for proper wheel assembly procedures.

SCREWDRIVERS



TOOL SELECTION

- Type of fastener/component
- Joint type
- Torque required
- Tool orientation and ergonomics
- Productivity



CHOOSE THE TYPE OF CLUTCH

IMPACT (ROCKING DOG)

- Good on very soft joints providing high speed rundown

POSITIVE CLUTCH

- Good for varying torque applications
- Operator can force clutch engagement for higher torque
- Excellent for wood applications

DIRECT DRIVE

- Bit directly connected to the motor
- Stall torque dependent on air pressure
- Simple to use and easy maintenance
- Light and small screwdriver

Screwdrivers Torque and Speed range

STRAIGHT OR PISTOL	TYPE OF CLUTCH	MODEL	TORQUE RANGE in.lbs (Nm)																FREE SPEED rpm	START						
			18 (2.0)	35 (4.0)	53 (6.0)	71 (8.0)	88 (10.0)	106 (12)	124 (14)	142 (16)	159 (18)	177 (20)	195 (22)	212 (24)	230 (26)	246 (28)	264 (30)	281 (32)			299 (34)	317 (36)	334 (38)	352 (40)	370 (42)	
	IMPACT	CP2136																							10,000	LEVER
	IMPACT	CP2141																							13,000	TRIGGER
	IMPACT	CP2036																							10,000	LEVER
	IMPACT	CP2037																							10,000	LEVER
	IMPACT	CP2041																							15,000	LEVER
	IMPACT	CP2042																							5,600	TRIGGER
	DIRECT	CP2755																							2,200	TRIGGER
	DIRECT	CP2765																							900	TRIGGER
	POSITIVE	CP2780																							2,100	TRIGGER

SCREWDRIVERS

Impact Clutch Screwdrivers



NEW

1/4"



CP2136

**COMPACT,
FAST & EASY TO USE**

FEATURES

- 1/4" Hex quick change
- Double rocking dog clutch
- Single hard reverse

BENEFITS

- Compact & Lightweight
- Low air consumption for a better efficiency
- Excellent for various MRO applications



NEW

1/4"



CP2141

**COMPACT,
FAST & EASY TO USE**

FEATURES

- 1/4" Hex bits
- Double rocking dog clutch
- Single hard reverse

BENEFITS

- Compact & Lightweight
- Low noise level for operator comfort
- Excellent for various MRO applications



CP2141

MODEL	PART NUMBER	DRIVE	FREE SPEED	TORQUE RANGE				NET WEIGHT		LENGTH		AIR CONS. @ LOAD		AIR INLET
				MIN.		MAX		lb	kg	in.	mm	cfm	l/s	
		in.	rpm	ft.lb	Nm	ft.lb	Nm							in.
CP2136	894 102 1360	1/4	10,000	5.93	8	15.5	21	1.50	0.68	7.28	185	6.78	3.2	1/4
CP2141	894 102 1410	1/4	13,000	7.38	10	17.7	24	1.92	0.87	5.63	143	13.2	6.2	1/4

All models: Hose int. 3/8" (9.5mm) - @90 PSI (@6.3 Bar)

Listed specifications are for reference only. Please check documents in each tool or on www.cp.com

Impact Screwdrivers



1/4" 



CP2041 FAST & FURIOUS

FEATURES

- Double rocking dog clutch
- Reversible
- Suspension bail included

BENEFITS

- High Torque and High Speed
- Comfortable handling with Ergo-grip
- Operator comfort with One-handed reverse



1/4" 



CP2042 COMPACT & HIGH TORQUE

FEATURES

- Double rocking dog clutch
- Reversible
- Suspension bail included

BENEFITS

- High power delivered with controlled speed
- Comfortable handling with Ergo-grip
- Operator comfort
- with One-handed reverse



1/4" 



CP2036 LOW NOISE & LIGHTWEIGHT

FEATURES

- Double rocking dog clutch
- Built-in power regulator
- Ergonomic with suspension bail

BENEFITS

- Low noise & lightweight
- Quick torque adjustment
- Excellent for soft type materials

CP2037

Similar features as CP2036 with higher torque

MODEL	PART NUMBER	DRIVE	FREE SPEED	TORQUE RANGE				NET WEIGHT		LENGTH		AIR CONS. @ LOAD		AIR INLET
				MIN.		MAX.		lb	kg	in.	mm	cfm	l/s	
				ft.lb	Nm	ft.lb	Nm							
CP2036	615 192 2036	1/4	10,000	2.5	3.4	11.8	16	1.73	0.78	8.15	207	13	6.1	1/4
CP2037	615 192 2037	1/4	10,000	13.3	18	20.7	28	1.81	0.82	8.15	207	13	6.1	1/4
CP2041	615 192 2041	1/4	15,000	5.9	8	31	42	2.29	1.04	5.90	152	27	12.7	1/4
CP2042	615 192 2042	1/4	5,600	4.4	6	30.2	41	2.25	1.02	5.90	152	27	12.7	1/4

SCREWDRIVERS

Positive Clutch & Direct Drive Screwdrivers



1/4"



CP2780

COMPACT & HIGH SPEED POSITIVE CLUTCH

FEATURES

- Reverse control at the trigger
- Progressive trigger
- Rubber grip

BENEFITS

- Perfectly designed for wood applications
- Operator can control clutch engagement for higher torque
- Good for prevailing torque applications



1/4"



CP2755

HIGH-SPEED DIRECT DRIVE

FEATURES

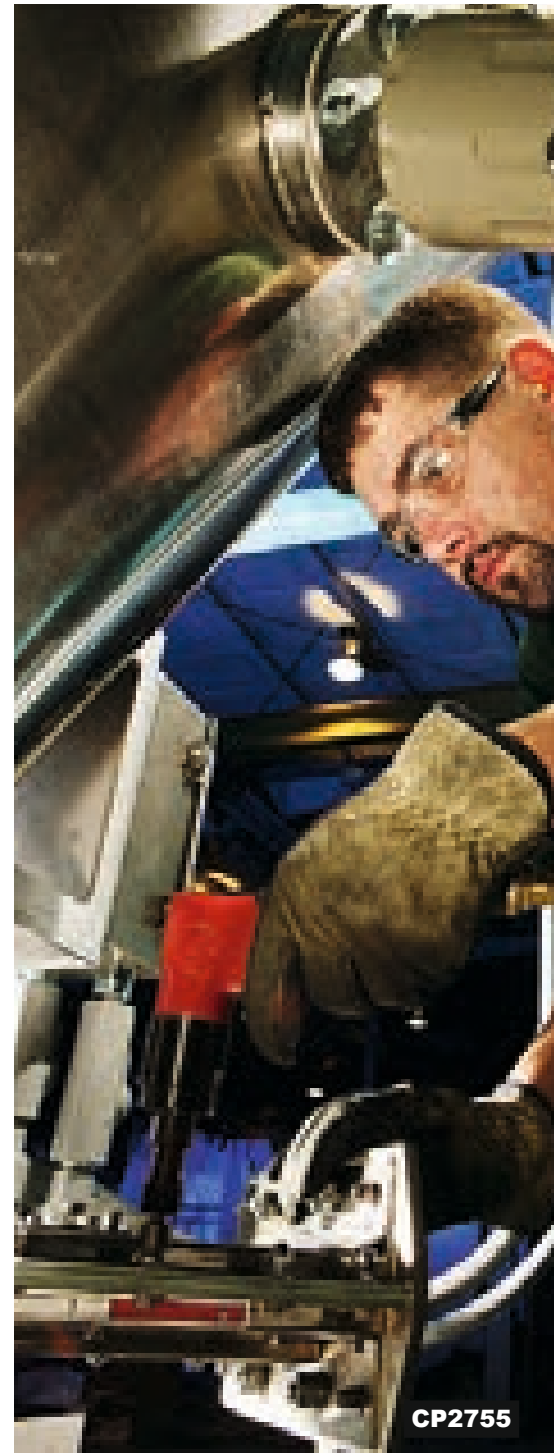
- Reverse control at the trigger
- Rubber grip
- Progressive trigger

BENEFITS

- Good for soft draw applications
- Fast screw rundown
- Compact & easy handling

CP2765

Similar features as CP2755 with higher torque



CP2755

MODEL	PART NUMBER	DRIVE	FREE SPEED	MAX TORQUE		NET WEIGHT		LENGTH		FREE SPEED AIR CONS.		AIR INLET
		in.	rpm	ft.lb	Nm	lb	kg	in.	mm	cfm	l/s	in.
CP2755	615 192 2755	1/4	2,200	5.4	7.3	2.27	1.03	6.30	160	29.7	14	1/4
CP2765	615 192 2765	1/4	900	6.6	9	2.60	1.18	7.00	178	29.7	14	1/4
CP2780	615 192 2780	1/4	2,100	7.4	10	2.35	1.06	6.46	164	29.7	14	1/4

All models: Hose int. 3/8" (9.5mm) - @90 PSI (@6.3 Bar)

Listed specifications are for reference only. Please check documents in each tool or on www.cp.com

Kits, Spares & Accessories



TUNE-UP KITS



MODEL	TUNE-UP KIT
CP2036	894 020 8405
CP2037	894 020 8401
CP2041	894 020 8402
CP2042	894 020 8406
CP2136	894 017 0493
CP2141	894 017 0516
CP2755	205 050 7773
CP2765	205 050 7803
CP2780	205 051 6763

ACCESSORIES INCLUDED

MODEL	DESCRIPTION	PART NUMBER
CP2136, CP2141	Suspension bail	894 017 0488

OPTIONAL ACCESSORIES



REAR EXHAUST HOSE ASSEMBLY - NOISE REDUCER

MODEL	DESCRIPTION	PART NUMBER
CP2755, CP2765, CP2780	Noise reducer	205 051 6493

SIDE HANDLE

MODEL	DESCRIPTION	PART NUMBER
CP2755, CP2765, CP2780	Side handle	205 049 8553



STUD CLEANERS (Recommended with CP2755)

PART NUMBER	DESCRIPTION	DIAMETER		LENGTH		REPLACEMENT BRUSHES (Sets of 5)
		in.	mm	in.	mm	
894 016 8858	Stud Cleaner M20x37L	0.79	20	1.46	37	894 016 9930
894 016 9793	Stud Cleaner M22x37L	0.87	22	1.46	37	894 016 9931
894 016 9794	Stud Cleaner M24x37L	0.94	24	1.46	37	894 016 9932
894 016 9927	Stud Cleaner M20x60L	0.79	20	2.36	60	894 016 9934
894 016 9928	Stud Cleaner M22x60L	0.87	22	2.36	60	894 016 9935
894 016 9929	Stud Cleaner M24x60L	0.94	24	2.36	60	894 016 9936
894 016 9795	Stud Cleaner M30x60L	1.18	30	2.36	60	894 016 9933

Did you know that rusted bolts have a bad impact on the clamping force? Keeping studs clean is key to have good tightening and the stud cleaners are the ideal solution for that.



BALANCERS

BALANCER	LOAD RANGE		STROKE		NET WEIGHT		PART NUMBER	CP TOOLS
	lb.	kg	ft	mm	lb.	kg		
CP9911 (up to 2.2lb/1kg)	0.8-2.2	0.4-1.0	5.2	1,600	1.3	0.6	894 109 9110	CP2036 / CP2037 CP2136 / CP2141
CP9912 (up to 4.4lb/2kg)	2.2-4.4	1.0-2.0	5.2	1,600	1.3	0.6	894 109 9120	CP2041 / CP2042 / CP2755 / CP2765 / CP2780

CORDLESS TOOLS



A complete range

Based on decades of expertise in building the right equipment for vehicle service and maintenance professionals, Chicago Pneumatic has developed a comprehensive range of battery-powered tools. Our 1/2", 1/4" and 3/8" impact wrenches and 1/2" and 3/8" drill drivers cover the widest spectrum of workshop needs.



▶ POWER & TORQUE

If you are used to air tools, you will be impressed with the CP cordless performance. A custom-designed motor and durable gearbox deliver the power and torque you need.

▶ MOBILITY

With a CP cordless tool, your reach is endless. Portable by nature, our impact wrenches and drill drivers will travel with you from internal to external jobs. What is more, they are ideally suited for dimly lit and difficult-to-access places.

▶ A GOOD FIT

Your power tool should be a natural extension of your hand. All CP cordless tools are designed with an ergonomic handle for maximum comfort. Switches are strategically placed for comfort and ease of use.

▶ RUGGED

In and out of the tool box, dirty hands, greasy floors,... CP knows the demanding conditions your equipment must endure. The components and housing of the CP cordless range were designed to provide maximum reliability and durability.

CORDLESS TOOLS

1/2" Impact Wrench



CP8848

1/2"



POWERFUL & EFFICIENT

- Torque reaction mechanism part in aluminum
- Charge gauge
- Rubber battery dampeners absorb impacts and shocks
- Aluminum back and clutch housing
- Single-hand forward/reverse operation
- Ergonomic handle fits your hand perfectly
- Resistant to shock

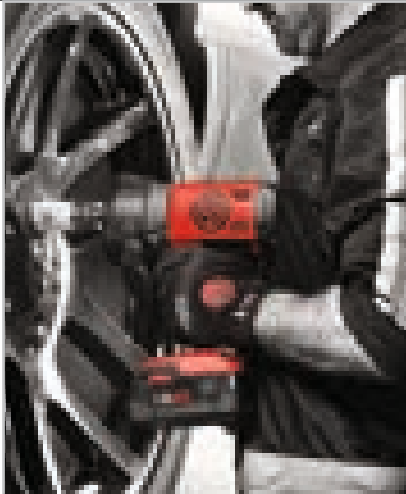


CP8848 Pack

Part No. 894 108 8480
 Kit includes
 - (1) 1/2" Impact wrench
 - (2) Batteries
 - (1) Charger

CP8848K Pack US

Part No. 894 108 8481
 Kit includes
 - (1) 1/2" Impact wrench
 - (2) Batteries
 - (1) Charger



- 1/2" anvil with ring retainer
- Max. torque: 775 ft.lb/1,050 Nm in reverse
- Bare tool
- 20-Volt CP20XP Lithium-Ion 4Ah battery (Not included with bare tool)



MODEL	PART NUMBER	OUTPUT DRIVE		FREE SPEED		MAX. TORQUE IN REVERSE		WORKING TORQUE		WEIGHT INCL. BATTERY		WEIGHT EXCL. BATTERY		LENGTH		HEIGHT		WIDTH		BATTERY	
		in.	rpm	ft.lb	Nm	ft.lb	Nm	lb	kg	lb	kg	in	mm	in	mm	in	mm	V	Ah		
CP8848 Bare tool	894 108 8489	1/2	1,900	775	1,050	50-700	68-950	6.9	3.1	5.35	2.43	9.5	243	9.9	251	3.2	81	20	4		
CP8848 Pack	894 108 8480	1/2	1,900	775	1,050	50-700	68-950	6.9	3.1	5.35	2.43	9.5	243	9.9	251	3.2	81	20	4		
CP8848K Pack US	894 108 8481	1/2	1,900	775	1,050	50-700	68-950	6.9	3.1	5.35	2.43	9.5	243	9.9	251	3.2	81	20	4		

* Tool packs come with 2 batteries and 1 charger. For bare tools, extra individual batteries and chargers are available.

Listed specifications are for reference only. Please check documents in each tool.

1/2" Impact Wrench



(*)

1/2" 



CP8848-2

POWERFUL & EFFICIENT

FEATURES

- 1/2" anvil with ring retainer
- Max. torque: 775 ft.lb/1,050 Nm in reverse
- Bare tool
- 20-Volt CP20XP Lithium-Ion 4Ah battery (Not included with bare tool)

BENEFITS

- Torque reaction part in aluminum
- Charge gauge
- Rubber battery dampeners absorb shock from impacts
- Alumun back and clutch housing
- Single-hand forward/reverse operation
- Ergonomic handle fits your hand perfectly
- Resistance to shock



CP8848-2 Pack

Part No. 894 108 8482
 Kit includes
 - (1) 1/2" Impact wrench
 - (2) Batteries
 - (1) Charger

CP8848-2K Pack US

Part No. 894 108 8483
 Kit includes
 - (1) 1/2" Impact wrench
 - (2) Batteries
 - (1) Charger

MODEL	PART NUMBER	OUTPUT DRIVE	FREE SPEED	MAX. TORQUE IN REVERSE		WORKING TORQUE		WEIGHT INCL. BATTERY		WEIGHT EXCL. BATTERY		LENGTH		HEIGHT		WIDTH		BATTERY	
		in.	rpm	ft.lb	Nm	ft.lb	Nm	lb	kg	lb	kg	in	mm	in	mm	in	mm	V	Ah
CP8848-2 Bare tool	894 108 8488	1/2	1,900	775	1,050	50-700	68-950	7.38	3.35	5.79	2.63	11.5	291	9.9	251	3.2	81	20	4
CP8848-2 Pack	894 108 8482	1/2	1,900	775	1,050	50-700	68-950	7.38	3.35	5.79	2.63	11.5	291	9.9	251	3.2	81	20	4
CP8848-2K Pack US	894 108 8483	1/2	1,900	775	1,050	50-700	68-950	7.38	3.35	5.79	2.63	11.5	291	9.9	251	3.2	81	20	4

* Tool packs come with 2 batteries and 1 charger.
 For bare tools, extra individual batteries and chargers are available.

Listed specifications are for reference only. Please check documents in each tool.

CORDLESS TOOLS

3/8" Impact Wrench



3/8"



CP8828

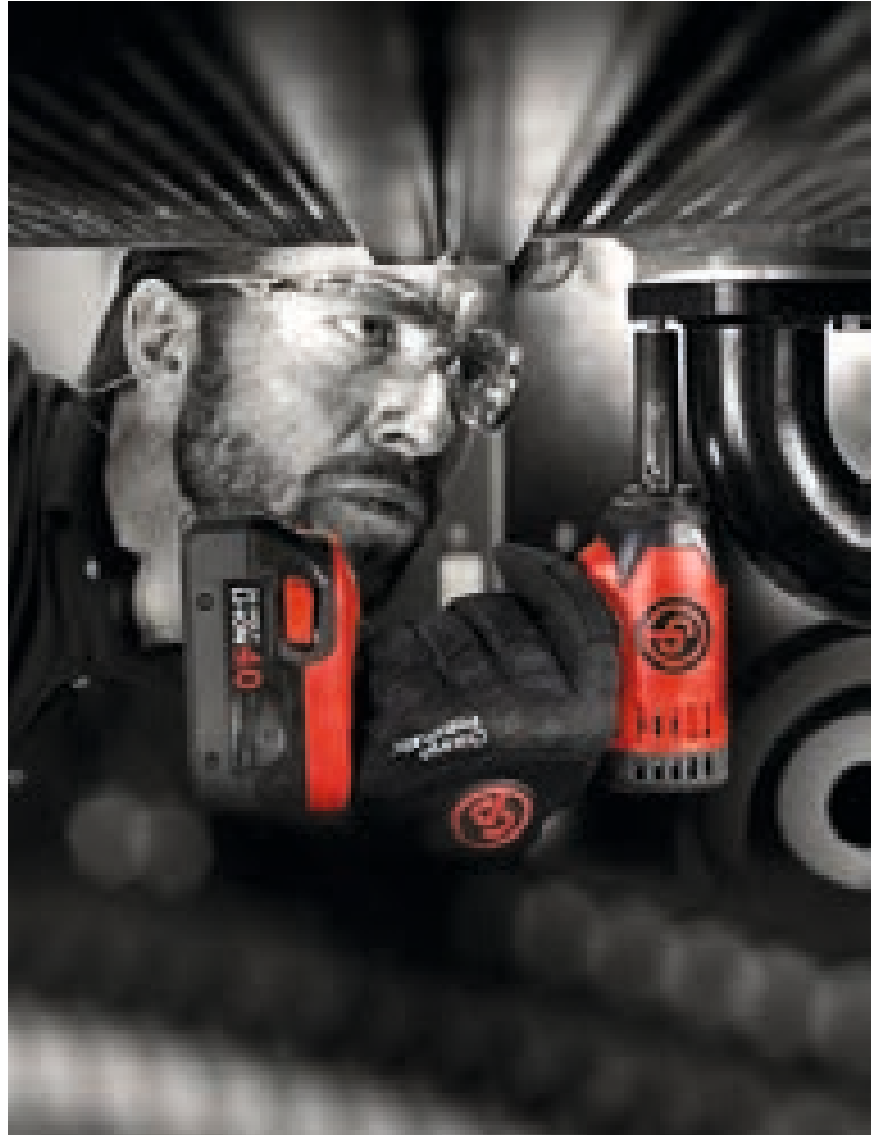
COMPACT & VERSATILE

FEATURES

- 3/8" anvil with ring retainer
- Max. torque: 150 ft.lb/205 Nm in reverse
- Bare tool
- 20-Volt CP20XP Lithium-ion 4Ah battery (Not included with bare tool)

BENEFITS

- Great power/weight ratio
- Charge gauge
- Rubber battery dampeners absorb impacts and shocks
- Aluminum clutch housing
- LED lighting for dimly lit work areas
- Single-hand forward/reverse operation
- Ergonomic handle fits your hand perfectly



CP8828 Pack

Part No. 894 108 8280
 Kit includes
 - (1) 3/8" Impact wrench
 - (2) Batteries
 - (1) Charger

CP8828K Pack US

Part No. 894 108 8281
 Kit includes
 - (1) 3/8" Impact wrench
 - (2) Batteries
 - (1) Charger

MODEL	PART NUMBER	OUTPUT DRIVE	FREE SPEED	MAX. TORQUE IN REVERSE	WORKING TORQUE		WEIGHT INCL. BATTERY		WEIGHT EXCL. BATTERY		LENGTH		HEIGHT		WIDTH		BATTERY		
		in.	rpm	ft.lb	Nm	ft.lb	Nm	lb	kg	lb	kg	in	mm	in	mm	in	mm	V	Ah
CP8828 Bare tool	894 108 8289	3/8	2,400	150	205	30-128	40-174	3.99	1.85	2.38	1.08	6.0	153	9.3	237	2.3	58	20	4
CP8828 Pack	894 108 8280	3/8	2,400	150	205	30-128	40-174	3.99	1.85	2.38	1.08	6.0	153	9.3	237	2.3	58	20	4
CP8828K Pack US	894 108 8281	3/8	2,400	150	205	30-128	40-174	3.99	1.85	2.38	1.08	6.0	153	9.3	237	2.3	58	20	4

* Tool packs come with 2 batteries and 1 charger.
 For bare tools, extra individual batteries and chargers are available.

Listed specifications are for reference only. Please check documents in each tool.

1/4" Impact Driver



(*)

1/4" Hex. 



CP8818 ULTRA COMPACT & LIGHTWEIGHT

FEATURES

- 1/4" quick change hex bit holder
- Max. torque: 85 ft.lb/115 Nm in reverse
- Bare tool
- 12-Volt CP12XP Lithium-ion 1.5Ah battery (Not included with bare tool)

BENEFITS

- Ultra compact for work in small and confined spaces
- LED lighting for dimly lit work areas
- Single-hand forward/reverse operation
- Ergonomic handle fits your hand perfectly



CP8818 Pack

Part No. 894 108 8180
Kit includes
- (1) 1/4" Impact Driver
- (2) Batteries
- (1) Charger

CP8818K Pack US

Part No. 894 108 8181
Kit includes
- (1) 1/4" Impact Driver
- (2) Batteries
- (1) Charger

MODEL	PART NUMBER	DRIVE	FREE SPEED	MAX. TORQUE IN REVERSE		WORKING TORQUE		WEIGHT INCL. BATTERY		WEIGHT EXCL. BATTERY		LENGTH		HEIGHT		WIDTH		BATTERY	
		in.	rpm	ft.lb	Nm	ft.lb	Nm	lb	kg	lb	kg	in	mm	in	mm	in	mm	V	Ah
CP8818 Bare tool	894 108 8189	1/4 Hex.	2,000	85	115	16-71	23-97	2.4	1.09	1.98	0.9	6.3	161	7.3	185	2.2	55.5	12	1.5
CP8818 Pack	894 108 8180	1/4 Hex.	2,000	85	115	16-71	23-97	2.4	1.09	1.98	0.9	6.3	161	7.3	185	2.2	55.5	12	1.5
CP8818K Pack US	894 108 8181	1/4 Hex.	2,000	85	115	16-71	23-97	2.4	1.09	1.98	0.9	6.3	161	7.3	185	2.2	55.5	12	1.5

* Tool packs come with 2 batteries and 1 charger. For bare tools, extra individual batteries and chargers are available.

Listed specifications are for reference only. Please check documents in each tool.

CORDLESS TOOLS

1/2" Hammer Drill Driver



(*)

1/2"



CP8548 STRONG & VERSATILE

FEATURES

- 1/2" spindle lock and keyless chuck
- Max. torque 60 ft.lbs/82 Nm
- Bare tool
- 20-Volt CP20X Lithium-Ion 4Ah battery (Not included with bare tool)

BENEFITS

- 3 modes (screwing, drilling and hammer drilling)
- Independent LED lighting for dimly lit work surfaces
- Variable speed trigger
- Ergonomic handle fits your hand perfectly



CP8548 Pack

Part No. 894 108 5480
Kit includes
- (1) 1/2" Hammer Drill Driver
- (2) Batteries
- (1) Charger

CP8548K Pack US

Part No. 894 108 5481
Kit includes
- (1) 1/2" Hammer Drill Driver
- (2) Batteries
- (1) Charger

MODEL	PART NUMBER	CHUCK		FREE SPEED 1 ST /2 ND GEAR	PERCUSSION UNDER LOAD 1 ST /2 ND GEAR	MAX. TORQUE		Ø DRILLING CAPACITY IN						Ø WOOD SCREWS (WITHOUT PREDRILLING)		WEIGHT INCL./EXCL. BATTERY		BATTERY			
		in	mm			RPM	BPM	ft.lb	Nm	STEEL		WOOD		BRICK & TILE		in	mm	lb	kg	V	Ah
										in	mm	in	mm	in	mm						
CP8548 Bare tool	894 108 5489	1/16-1/2	1.5-13	0-450/0-1,600	7,200/25,600	60	82	1/2	13	2.16	55	0.63	16	5/16	8	5.3/3.7	2.4/1.7	20	4		
CP8548 Pack	894 108 5480	1/16-1/2	1.5-13	0-450/0-1,600	7,200/25,600	60	82	1/2	13	2.16	55	0.63	16	5/16	8	5.3/3.7	2.4/1.7	20	4		
CP8548K Pack US	894 108 5481	1/16-1/2	1.5-13	0-450/0-1,600	7,200/25,600	60	82	1/2	13	2.16	55	0.63	16	5/16	8	5.3/3.7	2.4/1.7	20	4		

* Tool packs come with 2 batteries and 1 charger.
For bare tools, extra individual batteries and chargers are available.

Listed specifications are for reference only. Please check documents in each tool.

3/8" Drill Driver



(*)

3/8"



CP8528 ULTRA COMPACT & LIGHTWEIGHT

FEATURES

- 3/8" spindle lock and keyless chuck
- Max. torque: 24 ft.lb/34 Nm
- Bare tool
- 12-Volt CP12XP Lithium-ion 1.5Ah battery (Not included with bare tool)

BENEFITS

- Ultra compact
- LED lighting for dimly lit work areas
- Variable speed trigger
- Ergonomic handle fits your hand perfectly



CP8528 Pack

Part No. 894 108 5280

- Kit includes
- (1) 3/8" Drill Driver
 - (2) Batteries
 - (1) Charger

CP8528K Pack US

Part No. 894 108 5281

- Kit includes
- (1) 3/8" Drill Driver
 - (2) Batteries
 - (1) Charger

MODEL	PART NUMBER	CHUCK		FREE SPEED 1 ST GEAR/ 2 ND GEAR	MAX. TORQUE		Ø DRILLING CAPACITY IN				Ø WOOD SCREWS (WITHOUT PRE-DRILLING)		WEIGHT INCL. BATTERY		WEIGHT EXCL. BATTERY		LENGTH		BATTERY	
		in	mm		ft.lb	Nm	STEEL		WOOD		in	mm	lb	kg	lb	kg	in	mm	V	Ah
							in	mm	in	mm										
CP8528 Bare tool	894 108 5289	1/16-3/8	1.5-10	0-350/0-1,500	24	34	0.39	10	0.78	20	0.23	6	2.62	1.2	2.2	1.0	7	175	12	1.5
CP8528 Pack	894 108 5280	1/16-3/8	1.5-10	0-350/0-1,500	24	34	0.39	10	0.78	20	0.23	6	2.62	1.2	2.2	1.0	7	175	12	1.5
CP8528K Pack US	894 108 5281	1/16-3/8	1.5-10	0-350/0-1,500	24	34	0.39	10	0.78	20	0.23	6	2.62	1.2	2.2	1.0	7	175	12	1.5

* Tool packs come with 2 batteries and 1 charger.
For bare tools, extra individual batteries and chargers are available.

Listed specifications are for reference only. Please check documents in each tool.

CORDLESS TOOLS

Accessories



CP20XP
4Ah 20-Volt
Lithium-ion battery

CP12XP
1.5Ah 12-Volt
Lithium-ion battery



2X LONGER RUNTIME
Increases your productivity



WIDE TEMPERATURE WORKING RANGE
-0.4° F to 122° F
-18° C to 50° C



THERMAL & CURRENT OVERLOAD PROTECTION
Protection against over-heating and over-loading



INDIVIDUAL CELL MONITORING
Protection during charge and discharge

CP BATTERY SPECIFICATIONS

MODEL	PART NUMBER	VOLTAGE	AMP. HOUR	CHARGING TIME	DIMENSIONS		WEIGHT	
		V	Ah	min	in	mm	lb	kg
CP12XP	894 017 2263	12	1.5	30	2.0 x 1.81 x 3.42	51 x 46 x 87	0.41	0.19
CP20XP	894 017 2261	20	4	90	2.4 x 3.0 x 5.11	62 x 77 x 130	1.6	0.725

Maximum initial battery voltage - measured without a workload - is 20 volts. Nominal voltage is 18.

12-VOLT CHARGER SPECIFICATIONS



MODEL	PART NUMBER	VOLTAGE	AMP. HOUR	CHARGING TIME	DIMENSIONS		WEIGHT	
		V	Ah	min	in	mm	lb	kg
CP12CHE 12V EU	894 017 2259	12	1.5	30	2.83 x 4.73 x 6.7	72 x 120 x 170	1.2	0.54
CP12CHU 12V US	894 017 2283	12	1.5	30	2.83 x 4.73 x 6.7	72 x 120 x 170	1.2	0.54
CP12CHA 12V AUS	894 017 2285	12	1.5	30	2.83 x 4.73 x 6.7	72 x 120 x 170	1.2	0.54
CP12CHK 12V UK	894 017 2284	12	1.5	30	2.83 x 4.73 x 6.7	72 x 120 x 170	1.2	0.54

20-VOLT CHARGER SPECIFICATIONS



MODEL	PART NUMBER	VOLTAGE	AMP. HOUR	CHARGING TIME	DIMENSIONS		WEIGHT	
		V	Ah	min	in	mm	lb	kg
CP20CHE 20V EU	894 017 2262	20	4	90	3.6 x 4.92 x 7.48	91 x 125 x 190	1.58	0.72
CP20CHU 20V US	894 017 2286	20	4	90	3.6 x 4.92 x 7.48	91 x 125 x 190	1.58	0.72
CP20CHA 20V AUS	894 017 2288	20	4	90	3.6 x 4.92 x 7.48	91 x 125 x 190	1.58	0.72
CP20CHK 20V UK	894 017 2287	20	4	90	3.6 x 4.92 x 7.48	91 x 125 x 190	1.58	0.72

Accessories



21-Piece General Use Drill Bit Set

(Imperial - for North American markets)

Part No. 8940172304

- \varnothing : 1/16, 5/64, 3/32, 7/64, 1/8, 9/64, 5/32, 11/64, 3/16, 13/64, 7/32, 15/64, 1/4, 1, 7/64, 9/32, 19/64, 5/16, 21/64, 11/32, 23/64, 3/8 in
- High performance: HSS4241 and tin tips
- Multiple drilling uses: 135° tip shape
- Metal box



8-Piece Concrete Drill Bit Set

(Metric - not for North American markets)

Part No. 8940172302

- \varnothing : 3, 4, 5, 6, 7, 8, 9, 10 mm
- High durability: carbide tip and body in 45C steel
- High drilling efficiency: 130° diamond head



8-Piece Wood Drill Bit Set

(Metric - not for North American markets)

Part No. 8940172301

- \varnothing : 3, 4, 5, 6, 7, 8, 9, 10 mm
- High performance: 45C steel and cutting shoulder
- High precision: Pointer
- Plastic box



19-Piece Metal Drill Bit Set

(Metric - not for North American markets)

Part No. 8940172303

- \varnothing : 1, 1.5, 2, 2.5, 3, 3.5, 4, 4.5, 5, 5.5, 6, 6.5, 7, 7.5, 8, 8.5, 9, 9.5, 10 mm
- High durability & performance: HSS 4241 and tin tips
- High metal drilling precision: 118° tip shape



31-Piece 25 mm Driver Bit Set (ISO1173)

Part No. 8940172305

- High screw performance: chrome vanadium steel
- 1 magnetic locking ring bit holder, fast bit change (drive: 1/4" - 6.35 mm - length: 2.56" - 65 mm)
- Plastic box
- Slotted: 4, 5, 6, 7 mm
- Phillips ®: PH0, 2 x PH1, 3 x PH2, 2 x PH3
- Pozidriv ®: 2 x PZ1, 3 x PZ2, 2 x PZ3
- Torx ®: T10, T15, T20, T25, T30
- Hexagonal: 2, 2.5, 3, 4, 5, 6 mm



1/2" Drive Impact Socket Sets

Part No.	Model	Description (sizes)
894 016 4464	SS413WP	3PC, Deep thin wall protector set [17, 19, 21 mm]
894 016 6760	SS413DTW	3PC, Deep thin wall set [17, 19, 21 mm]
894 016 4465	SS4013D	13PC, Deep SAE set
894 016 4458	SS4114D	14PC, Deep metric set

More references available in the CP Socket Catalog.

MAGNETIC TOOL HOLDER

TOOL	PART NUMBER
CP9841	894 016 6664

Ideal for 1/2" impacts or smaller



GLOVES

DESCRIPTION	PART NUMBER
Impact Gloves: Medium	894 017 1574
Impact Gloves: Large	894 015 8618
Impact Gloves: X Large	894 015 8619
Impact Gloves: XX Large	894 017 1573

